

# 收回441802008009GB00418号部分用地平面图

38414.019  
2609.946

38414.699  
2609.946

界址点坐标表(剩余地块一)

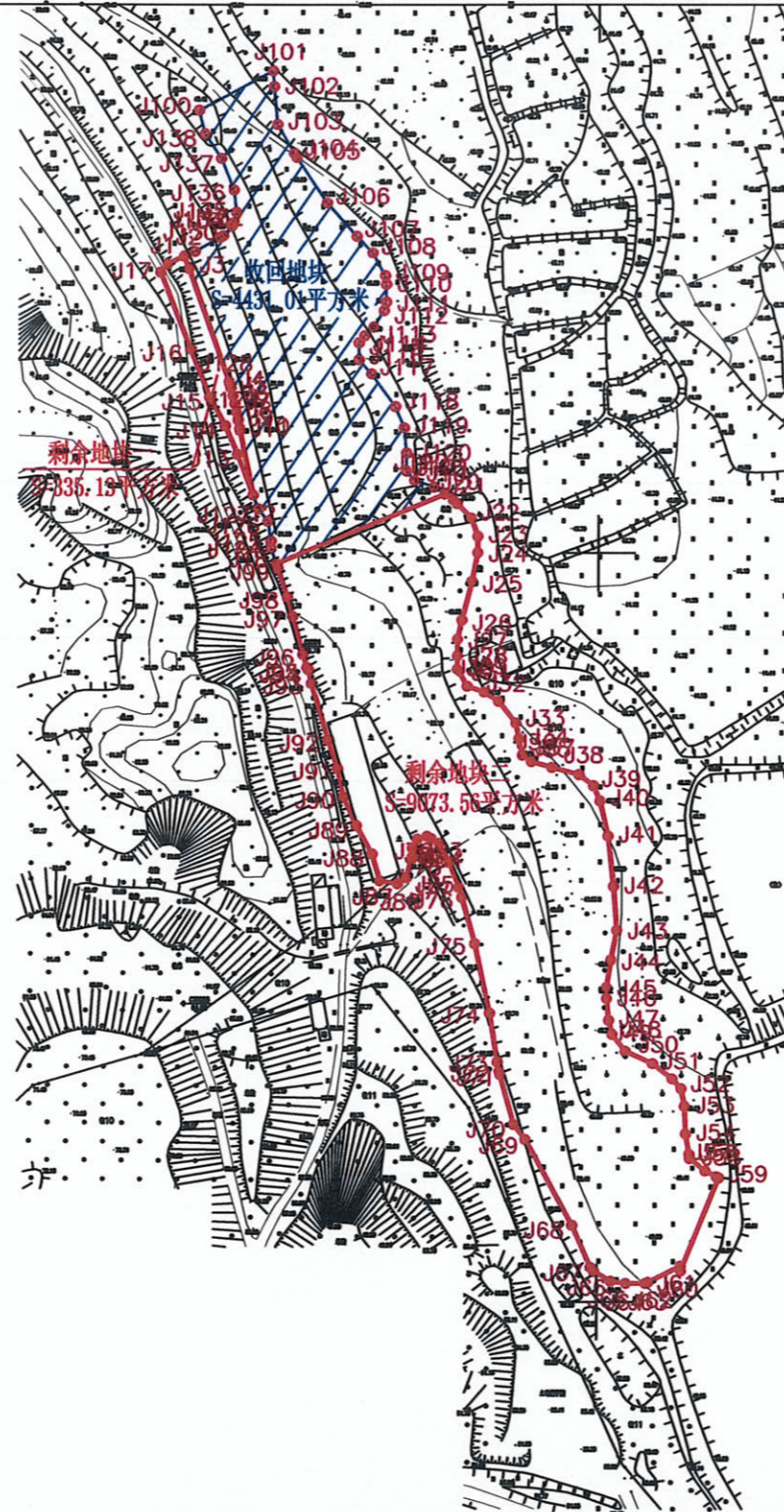
点号	X	Y	边长
J1	2609865.585	38414196.684	4.86
J2	2609867.586	38414201.116	3.62
J3	2609864.224	38414202.455	32.19
J4	2609833.909	38414213.272	1.48
J5	2609832.477	38414213.665	2.22
J6	2609830.327	38414214.224	2.22
J7	2609828.169	38414214.754	2.22
J8	2609826.004	38414215.255	2.22
J9	2609823.832	38414215.725	2.22
J10	2609821.654	38414216.166	0.67
J11	2609820.999	38414216.289	17.58
J12	2609803.784	38414219.869	11.69
J13	2609814.681	38414215.631	8.34
J14	2609822.301	38414212.244	8.72
J15	2609829.922	38414208.011	13.83
J16	2609842.782	38414202.936	22.04
J17	2609863.281	38414194.847	2.95
J1	2609865.585	38414196.684	

S=335.13 平方米 合0.5027亩

界址点坐标表(剩余地块二)

点号	X	Y	边长
J18	2609785.500	38414226.206	48.73
J19	2609804.165	38414271.217	2.81
J20	2609802.616	38414273.559	1.43
J21	2609801.611	38414274.572	5.45
J22	2609797.772	38414278.442	5.18
J23	2609792.929	38414280.278	4.38
J24	2609788.554	38414280.278	7.81
J25	2609780.897	38414278.754	10.68
J26	2609770.585	38414275.981	5.30
J27	2609765.429	38414274.770	4.37
J28	2609761.054	38414274.770	3.59
J29	2609757.460	38414274.770	5.29
J30	2609752.929	38414277.504	4.87
J31	2609751.366	38414282.114	4.67
J32	2609748.866	38414286.059	7.39
J33	2609743.085	38414290.669	4.31
J34	2609738.866	38414291.567	4.47
J35	2609734.491	38414292.465	3.00
J36	2609732.771	38414294.926	5.73
J37	2609731.210	38414300.434	7.54
J38	2609729.335	38414307.739	4.97
J39	2609726.365	38414311.723	4.46
J40	2609722.304	38414313.559	9.62
J41	2609712.928	38414315.708	13.52
J42	2609699.491	38414317.231	11.75
J43	2609687.772	38414318.129	8.11
J44	2609679.802	38414316.606	7.44
J45	2609672.460	38414315.395	2.97
J46	2609669.490	38414315.395	5.81
J47	2609663.709	38414315.981	3.87
J48	2609659.959	38414316.919	5.83
J49	2609655.428	38414320.591	8.01
J50	2609652.146	38414327.895	6.59
J51	2609648.084	38414333.090	3.62
J52	2609645.428	38414335.552	4.77
J53	2609640.740	38414336.450	7.35
J54	2609633.396	38414336.762	5.55
J55	2609627.928	38414337.700	1.15
J56	2609626.790	38414337.832	

S=9073.56 平方米 合13.6103亩



界址点坐标表(收回地块)

点号	X	Y	边长
J100	2609906.557	38414205.023	22.58
J101	2609917.147	38414224.965	4.23
J102	2609912.929	38414225.278	10.20
J103	2609902.772	38414226.215	8.91
J104	2609895.115	38414230.762	1.27
J105	2609894.022	38414231.411	14.71
J106	2609881.835	38414239.653	11.92
J107	2609872.929	38414247.583	6.11
J108	2609868.553	38414251.841	6.96
J109	2609862.460	38414255.200	2.36
J110	2609860.116	38414255.512	4.69
J111	2609855.428	38414255.512	2.42
J112	2609853.085	38414254.926	5.18
J113	2609848.710	38414252.153	3.37
J114	2609846.366	38414249.731	2.42
J115	2609844.491	38414248.208	4.53
J116	2609839.960	38414248.208	5.03
J117	2609836.210	38414251.567	10.84
J118	2609827.460	38414257.973	6.12
J119	2609821.835	38414260.395	

界址点坐标表(收回地块)

点号	X	Y	边长
J119	2609821.835	38414260.395	6.75
J120	2609815.116	38414261.020	4.84
J121	2609810.272	38414261.020	3.30
J122	2609807.772	38414263.169	5.47
J123	2609806.053	38414268.364	3.42
J19	2609804.165	38414271.217	48.73
J18	2609785.500	38414226.206	4.54
J124	2609789.806	38414224.770	1.72
J125	2609791.522	38414224.770	5.38
J126	2609796.835	38414223.911	4.18
J127	2609800.102	38414221.301	3.95
J12	2609803.784	38414219.869	17.58
J11	2609820.999	38414216.289	0.67
J10	2609821.654	38414216.166	2.22
J9	2609823.832	38414215.725	2.22
J8	2609826.004	38414215.255	2.22
J7	2609828.169	38414214.754	2.22
J6	2609830.327	38414214.224	2.22
J5	2609832.477	38414213.665	1.48
J4	2609833.909	38414213.272	0.24
J128	2609833.681	38414213.353	0.48
J129	2609834.143	38414213.207	0.24
J4	2609833.909	38414213.272	32.19
J3	2609864.224	38414202.455	3.62
J2	2609867.586	38414201.116	3.11
J130	2609868.866	38414203.950	7.73
J131	2609872.595	38414210.717	1.02
J132	2609873.085	38414211.606	3.35
J133	2609875.585	38414213.833	0.88
J134	2609876.416	38414214.118	3.09
J135	2609879.335	38414215.122	5.97
J136	2609885.272	38414214.458	9.13
J137	2609893.710	38414210.981	7.91
J138	2609900.272	38414206.567	6.47
J100	2609906.557	38414205.023	

S=4431.01 平方米 合6.6465亩

备注: 该宗地划拨决定书电子监管号: 4418002020A05967  
 编号: 441801-2020-0182(A)  
 划拨决定书宗地面积: 13839.70平方米,  
 拟收回地块面积: 4431.01平方米, 剩余地块面积: 9408.69平方米。

清远市测绘地理信息中心  
 2609.506  
 38414.019

2023年7月数字化成图  
 2000国家大地坐标系  
 1985国家高程基准  
 2017年版图式

1:2000

测量员: 龙 聪  
 绘图员: 杨贤辉  
 检查员: 曹劲松

38414.699